

Pipes and Tubes



Stainless Steel & Carbon Steel

LUDA

www.ludahk.com

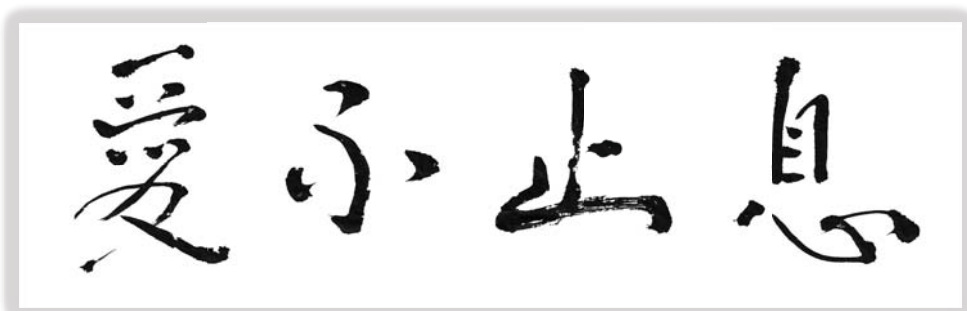
Introduction

Being involving in manufacturing for 4 generations, Luda's Family witnessed the dramatic changes in China. Starting with Farming tools foundry in the first generation, processing factory in the second generation, flanges, fittings, valves & metal products factories in the third generation, Luda has smoothly passed to fourth generation.

Luda started as a small manufacturer in countryside. We witnessed how the history changed business world. The world keeps changing but the value of Luda remains on the cutting edge of those changes. We truly believe that love never fails. We believe our team, that is encouraged to participate in the creation of new ideas and new convictions. We have employees of 13 nationalities contributing in Luda and this number is increasing every year. We prove that we are in global basis to meet the global standards.

"We focus upon creativity in service and excellent quality so that we can pursue the market leadership."

Corporate Motto



"Love never fails"
From Bible

Love is never tired of waiting; love is kind; love has no envy; love has no high opinion of itself, love has no pride; Love's ways are ever fair, it takes no thought for itself; it is not quickly made angry, it takes no account of evil; It takes no pleasure in wrong doing, but has joy in what is true; Love has the power of undergoing all things, having faith in all things, hoping all things. Though the prophet's word may come to an end, tongues come to nothing, and knowledge have no more value, love has no end.

(Corinthians 13.4--8)

"There is love, there is no hard customers, no irresponsibility, no deceit, no compromise, no greed, no selfishness, no dirty business."

Luda's Vision

To provide excellent Chinese products & services to every country in the world, to win the reputation of being an international company rooted in Hong Kong, China.

Luda Philosophy

We act with ambition, but maintain our calm spirit towards success & result. We pursue smartness but kind to people. We are confident and saying it without any conceit. We always keep learning and being grateful. We believe in miracles and give Glory to God.

Luda's Mission

Love people, our work, our company and our global community.

Unique global network to meet customer needs.

Dynamic response to the ever-changing competition.

Aggressive growth strategies to explore new business opportunities.



Raw Materials 01



04 Mechanical Testing Machine



Raw Materials 02



05 Preparation of Drawing



Spectrometer 03



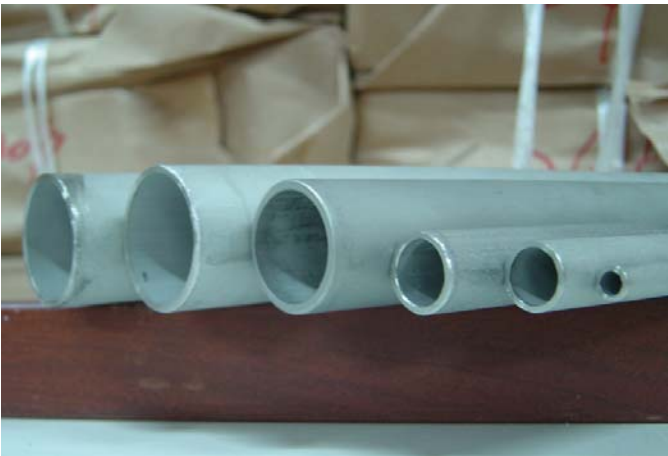
06 Drawing



Heating 07



10 Stamping



Samples 08



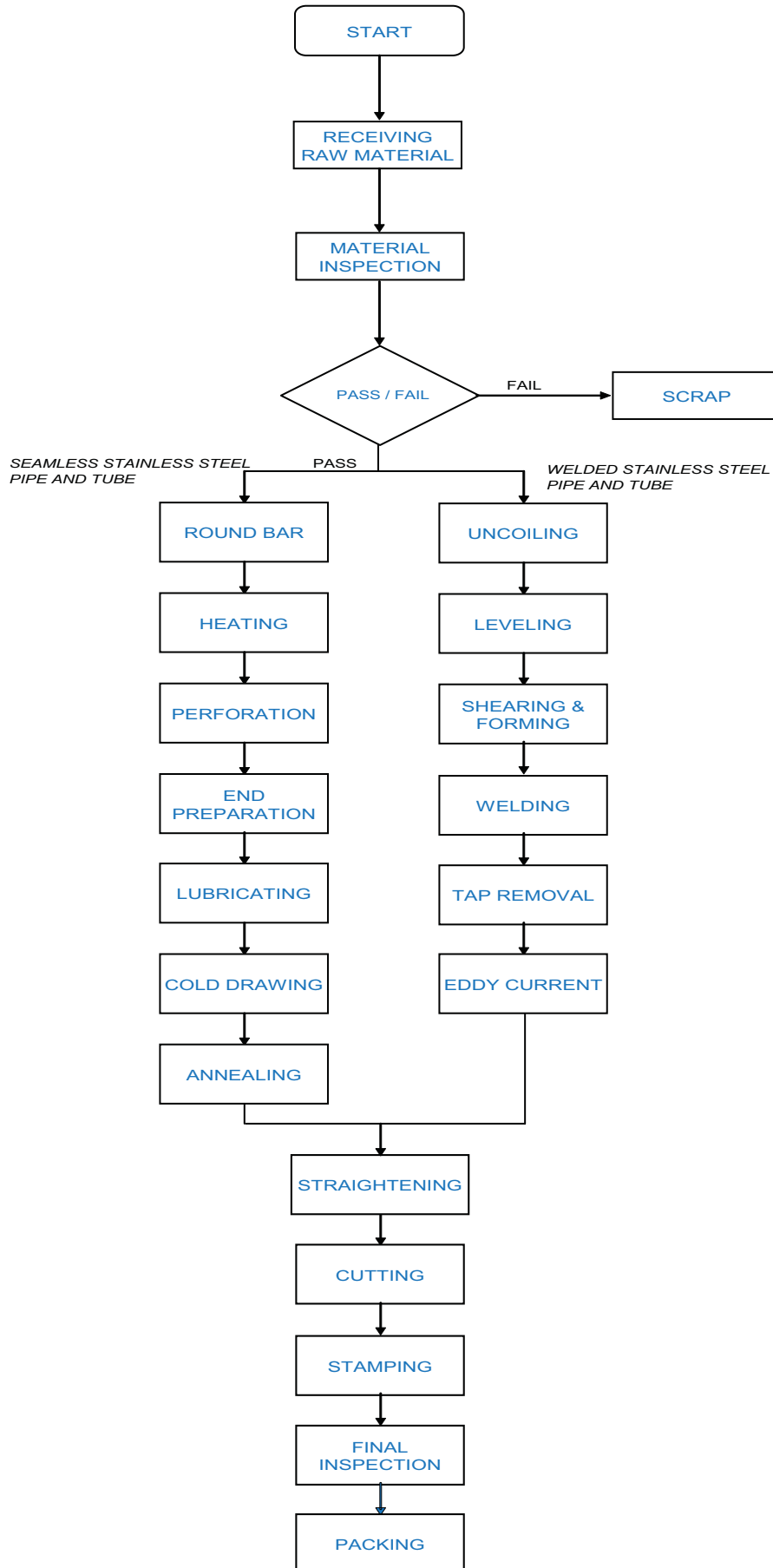
11 Packing in Bundle



Checking 09



12 Wooden Case Packing



A. American Standard

A213 -	Standard Specification for Seamless, Welded, Austenitic Stainless Steel Tubing for General Service
A269 -	Standard Specification for Seamless Ferritic and Austenitic Alloy-Steel Boiler, Superheater And Heat-Exchanger Tubes
A249 -	Standard Specification for Welded Austenitic Steel Boiler, Superheater Heat-Exchanger, and condenser Tubes
A270 -	Standard Specification for Seamless and Welded Austenitic and Ferritic/Austenitic Stainless Steel Sanitary Tubing
A312 -	Standard Specification for Seamless, Welded, and Heavily Cold Worked Austenitic Stainless Steel Pipes
A554 -	Standard Specification for Welded Stainless Steel Mechanical Tubing
B36.10 -	Standard Specification for General Requirements for Alloy and Stainless Steel Pipe
B36.19 -	Standard Specification for General Requirements for Ferritic Alloy Steel, Austenitic Alloy Steel, and Stainless Steel Tubes
B36.10 -	Welded and Stainless Wrought Steel Pipe
B36.19 -	Stainless Steel Pipe

B. German Standard

DIN 2448 -	Seamless Steel Pipes and Tubes; Dimensions, Conventional Masses per unit length
DIN 2458 -	Welded Steel Pipes and Tubes; Dimensions, Conventional Masses per unit length
DIN 17455 -	Welded circular stainless steel tubes with general quality requirements – technical delivery conditions
DIN 17456 -	Seamless circular stainless steel tubes with general quality requirements – technical delivery conditions
DIN 17457 -	Welded Circular austenitic stainless steel tubes subject to special requirements -- technical delivery conditions
DIN17458 -	Seamless circular austenitic stainless steel tubes subject to special requirements – technical delivery conditions
EN10216-5 -	Seamless Steel tubes for pressure purpose – Technical delivery conditions Part 5 : Stainless Steel Tubes

C. French Standard

NFE 49117 -	Steel tubes—Seamless plain end for pipelines and other uses. Ferritic and Austenitic stainless steels dimensions -- technical delivery conditions
-------------	---

D. Japanese Standard

JIS G3446 -	Welded Stainless Steel Mechanical Tube and Structural Purposes
JIS G3459 -	Stainless Steel Pipes
JIS G3463 -	Stainless steel boiler and heat exchanger tubes.

WALL THICKNESS SCHEDULES

SIZE	OUTSIDE DIAMETER			ANSI																DIN					JIS									
	DN	INCH	ANSI	ANSI	DIN	JIS	S8S	S10S	S20S	S40S	S80S	S5	S10	S20	S30	STD	S40	S60	XS	S80	S100	S120	S140	S160	XXS	S1	S2	S3	S4	S5	SGP	LG		
15	1/2	21.3	21.3	21.7	1.65	2.11	2.50	2.77	3.73	1.65	2.11	2.77	2.41	2.77	2.77	2.77	3.73	3.73	3.73	3.73	3.73			4.78	7.47	1.6			2	3.2	4	2.8		
20	3/4	26.7	26.9	27.2	1.65	2.11	2.50	2.87	3.91	1.65	2.11	2.87	2.41	2.87	2.87	2.87	3.91	3.91	3.91	3.91	3.91			5.56	7.82	1.6			2.3	3.2	4	2.8		
25	1	33.4	33.7	34	1.65	2.77	3.00	3.38	4.55	1.65	2.77	3.38	2.90	3.38	3.38	3.38	4.55	4.55	4.55	4.55	4.55			6.35	9.09	2			2.6	3.2	4	3.2		
32	1.1/4	42.2	42.4	42.7	1.65	2.77	3.00	3.56	4.85	1.65	2.77	3.56	2.97	3.56	3.56	3.56	4.85	4.85	4.85	4.85	4.85			6.35	9.70	2			2.6	3.6	4	3.5		
40	1.1/2	48.3	48.3	48.6	1.65	2.77	3.00	3.68	5.08	1.65	2.77	3.68	3.18	3.68	3.68	3.68	5.08	5.08	5.08	5.08	5.08			7.14	10.15	2			2.6	4	5	3.5		
50	2	60.3	60.3	60.5	1.65	2.77	3.50	3.91	5.54	1.65	2.77	3.91	3.18	3.91	3.91	3.91	5.54	5.54	5.54	5.54	5.54			8.74	11.07	2			2.9	4.5	5.6	3.8		
65	2.1/2	73	76.1	76.3	2.11	3.05	3.50	5.16	7.01	2.11	3.05	4.78	4.78	5.16	5.16	5.16	7.01	7.01	7.01	7.01	7.01			9.53	14.02	2.3			2.9	5	7.1	4.2		
80	3	88.9	88.9	89.1	2.11	3.05	4.00	5.49	7.62	2.11	3.05	4.78	4.78	5.49	5.49	5.49	7.62	7.62	7.62	7.62	7.62			11.13	15.24	2.3			3.2	5.6	8	4.2		
90	3.1/2	101.6		101.6	2.11	3.05	4.00	5.74	8.08	2.11	3.05	4.78	4.78	5.74	5.74	5.74	8.08	8.08	8.08	8.08	8.08											4.2		
100	4	114.3	114.3	114.3	2.11	3.05	4.00	6.02	8.56	2.11	3.05	4.78	4.78	6.02	6.02	6.02	8.56	8.56	8.56	8.56	8.56	11.13		13.49	17.12	2.6			3.6	6.3	8.8	4.5		
125	5	141.3	139.7	139.8	2.77	3.40	5.00	6.55	9.53	2.77	3.40			6.55	6.55	6.55	9.53	9.53	9.53	9.53	9.53	12.70		15.88	19.05	2.6			4	6.3	10	4.5		
150	6	168.3	168.3	165.2	2.77	3.40	5.00	7.11	10.97	2.77	3.40			7.11	7.11	7.11	10.97	10.97	10.97	10.97	10.97	14.27		18.26	21.95	2.6	4	4.5	7.1	11	5	5		
200	8	219.1	219.1	216.3	2.77	3.76	6.50	8.18	12.70	2.77	3.76	6.35	7.04	8.18	8.18	8.18	12.70	12.70	12.70	12.70	12.70	18.26	20.62	23.01	22.23	2.9	4.5	6.3	8	12.5	5.8	5.8		
250	10	273	273	267.4	3.40	4.19	6.50	9.27	12.70	3.40	4.19	6.35	7.80	9.27	9.27	9.27	12.70	12.70	12.70	12.70	12.70	21.44	25.40	28.58	25.40	2.9	5	6.3	8.8		6.6	6.6		
300	12	323.8	323.9	318.5	3.96	4.57	6.50	9.53	12.70	3.96	4.57	6.35	8.38	9.53	10.31	10.31	14.27	12.70	12.70	12.70	12.70	25.40	28.58	33.32	25.40	2.9	5.6	7.1	10		6.9	6.9		
350	14	355.6	355.6	355.6	3.96	4.78	7.90	9.53	12.70	3.96	4.78	7.92	9.53	9.53	11.13	11.13	15.09	12.70	12.70	12.70	12.70	27.79	31.75	35.71		3.2	5.6	8	11		7.9	7.9		
400	16	406.4	406.4	406.4	4.19	4.78	7.90	9.53	12.70	4.19	4.78	7.92	9.53	9.53	12.70	12.70	16.66	12.70	12.70	12.70	12.70	30.96	36.53	40.49		3.2	6.3	8.8	12.5		7.9	7.9		
450	18	457	457	457.2	4.19	4.78	7.90	9.53	12.70	4.19	4.78	7.92	11.13	9.53	14.27	14.27	19.05	12.70	12.70	12.70	12.70	34.93	39.67	45.24		4	6.3	10			7.9	7.9		
500	20	508	508	508	4.78	5.54	7.90	9.53	12.70	4.78	5.54	7.92	12.70	9.53	15.09	15.09	20.62	12.70	12.70	12.70	12.70	38.10	44.45	50.01		4	6.3	11			7.9	7.9		
550	22	559		558.8	4.78	5.54		9.53	12.70	4.78	5.54	9.53	12.70	9.53			22.23	12.70	12.70	12.70	12.70	41.28	47.63	53.98		5					7.9	7.9		
600	24	610	610	609.6	5.54	6.35		9.53	12.70	5.54	6.35	9.53	14.27	9.53	17.48	17.48	24.61	12.70	12.70	12.70	12.70	46.02	52.37	59.54		5	6.3	12.5			7.9	7.9		
650	26	660		660.4							7.92	12.70	14.27	9.53				12.70	12.70	12.70	12.70										7.9	7.9		
700	28	711	711	711.2							7.92	12.70	15.88	9.53				12.70	12.70	12.70	12.70					5	7.1	12.5			7.9	7.9		
750	30	762		762	6.35	7.92		9.53	12.70	6.35	7.92	12.70	15.88	9.53				12.70	12.70	12.70	12.70										7.9	7.9		
800	32	813	813	812.8							7.92	12.70	15.88	9.53	17.48	17.48		12.70	12.70	12.70	12.70					5.6	8	12.5			7.9	7.9		
850	34	864		863.6							7.92	12.70	15.88	9.53	17.48	17.48		12.70	12.70	12.70	12.70										7.9	7.9		
900	36	914	914	914.4							7.92	12.70	15.88	9.53	19.05	19.05		12.70	12.70	12.70	12.70					6.3	10	12.5			7.9	7.9		
950	38	965		965.2							7.92	12.70	15.88	9.53				12.70	12.70	12.70	12.70										7.9	7.9		
1000	40	1016	1016	1016							7.92	12.70	15.88	9.53				12.70	12.70	12.70	12.70					6.3	10	12.5			7.9	7.9		
1050	42	1067		1066.8							7.92	12.70	15.88	9.53				12.70	12.70	12.70	12.70													
1100	44	1118		1117.6							7.92	12.70	15.88	9.53				12.70	12.70	12.70	12.70													
1150	46	1168		1168.4							7.92	12.70	15.88	9.53				12.70	12.70	12.70	12.70													
1200	48	1219	1220	1219.2							7.92	12.70	15.88	9.53				12.70	12.70	12.70	12.70					6.3	12.5							

STAINLESS STEEL			CHEMICAL COMPOSITION %									MECHANICAL PROPERTIES				
			C	Mn	P	S	Si	Ni	Cr	Mo	N	Ti	Tensile Strength	Yield Strength	Elongation (in 2 inch)	Hardness
			%	%	%	%	%	%	%	%	%	MPa	MPa	min, %	HRB	
TP304	ASTM A312	Min%					8.00	8.00								
		Max%	0.080	2.00	0.045	0.030	1.00	11.00	20.00				515	205	35	90
TP304L	ASTM A312	Min%					11.00	16.00	2.00							
		Max%	0.080	2.00	0.045	0.030	1.00	14.00	18.00	3.00			485	170	35	90
TP304/304L	ASTM A312	Min%					8.00	18.00								
		Max%	0.035	2.00	0.045	0.030	1.00	11.00	20.00				515	205	35	90
TP316	ASTM A312	Min%					11.00	16.00	2.00							
		Max%	0.080	2.00	0.045	0.030	1.00	14.00	18.00	3.00			515	205	35	90
TP316L	ASTM A312	Min%					10.00	16.00	2.00							
		Max%	0.035	2.00	0.045	0.030	1.00	14.00	18.00	3.00			485	170	35	90
TP316/316L	ASTM A312	Min%					11.00	16.00	2.00							
		Max%	0.035	2.00	0.045	0.030	1.00	14.00	18.00	3.00			515	205	35	90
TP321	ASTM A312	Min%					9.00	17.00								
		Max%	0.080	2.00	0.045	0.030	1.00	12.00	19.00		0.10	5xC - 0.70	515	205	35	90
TP304	ASTM A213	Min%					8.00	18.00								
		Max%	0.080	2.00	0.045	0.030	1.00	11.00	20.00				515	205	35	90
TP304L	ASTM A213	Min%					8.00	18.00								
		Max%	0.035	2.00	0.045	0.030	1.00	12.00	20.00				485	170	35	90
TP304/304L	ASTM A213	Min%					8.00	18.00								
		Max%	0.035	2.00	0.045	0.030	1.00	11.00	20.00				515	205	35	90
TP316	ASTM A213	Min%					10.00	16.00	2.00							
		Max%	0.080	2.00	0.045	0.030	1.00	14.00	18.00	3.00			515	205	35	90
TP316L	ASTM A213	Min%					10.00	16.00	2.00							
		Max%	0.080	2.00	0.045	0.030	1.00	14.00	18.00	3.00			515	205	35	90
TP316/316L	ASTM A213	Min%					10.00	16.00	2.00							
		Max%	0.035	2.00	0.045	0.030	1.00	14.00	18.00	3.00			515	205	35	90
TP321	ASTM A213	Min%					9.00	17.00								
		Max%	0.080	2.00	0.045	0.030	1.00	12.00	19.00			5x(C+N) - 0.70	515	205	35	90
TP304	ASTM A269	Min%					8.00	18.00								
		Max%	0.080	2.00	0.045	0.030	1.00	11.00	20.00				515	205	35	90
TP304L	ASTM A269	Min%					8.00	18.00								
		Max%	0.035	2.00	0.045	0.030	1.00	12.00	20.00				485	170	35	90
TP304/304L	ASTM A269	Min%					8.00	18.00								
		Max%	0.035	2.00	0.045	0.030	1.00	11.00	20.00				515	205	35	90
TP316	ASTM A269	Min%					10.00	16.00	2.00							
		Max%	0.080	2.00	0.045	0.030	1.00	14.00	18.00	3.00			515	205	35	90
TP316L	ASTM A269	Min%					10.00	16.00	2.00							
		Max%	0.035	2.00	0.045	0.030	1.00	15.00	18.00	3.00			485	170	35	90
TP316/316L	ASTM A269	Min%					10.00	16.00	2.00							
		Max%	0.035	2.00	0.045	0.030	1.00	14.00	18.00	3.00			515	205	35	90
TP321	ASTM A269	Min%					9.00	17.00								
		Max%	0.080	2.00	0.045	0.030	1.00	12.00	19.00			5x(C+N) - 0.70	515	205	35	90
1.4301	EN 10216-5:2004	Min%					8.00	17.00					500			
		Max%	0.070	2.00	0.040	0.015	1.00	10.50	19.50		0.11		700	195	40	90
1.4401	EN 10216-5:2004	Min%					10.00	16.50	2.00				510			
		Max%	0.070	2.00	0.040	0.015	1.00	13.00	18.50	2.50	0.11		710	205	40	90
1.4541	EN 10216-5:2004	Min%					9.00	17.00					460			
		Max%	0.080	2.00	0.040	0.015	1.00	12.00	19.00			5xC - 0.70	680	180	35	90
1.4301/1.4307	EN 10216-5:2004	Min%					8.00	17.50					500			
		Max%	0.030	2.00	0.040	0.015	1.00	10.00	19.50		0.11		680	195	40	90
1.4301/1.4306	EN 10216-5:2004	Min%					10.00	18.00					500			
		Max%	0.030	2.00	0.040	0.015	1.00	10.50	19.50		0.11		680	195	40	90
1.4307	EN 10216-5:2004	Min%					8.00	17.50					460			
		Max%	0.030	2.00	0.040	0.015	1.00	10.00	19.50		0.11		680	180	40	90
1.4306	EN 10216-5:2004	Min%					10.00	18.00					460			
		Max%	0.030	2.00	0.040	0.015	1.00	12.00	20.00		0.11		680	180	40	90
1.4404	EN 10216-5:2004	Min%					10.00	16.50	2.00				490			
		Max%	0.030	2.00	0.040	0.015	1.00	13.00	18.50	2.50	0.11		690	190	40	90
TU Z 6 CN 18-09	NF A49-117	Min%					8.00	17.00					490			
		Max%	0.090	2.04	0.045	0.035	1.05	11.10	20.20				740	200	45	90
TU Z 6 CND 17-11	NF A49-117	Min%					10.00	16.00	1.90				490			
		Max%	0.080	2.04	0.045	0.035	1.05	12.65	18.20	2.50			740	190	45	90
TU Z 6 CNT 18-10	NF A49-117	Min%					9.00	17.00					490			
		Max%	0.090	2.04	0.045	0.035	1.05	12.15	20.20			5xC - 0.65	740	190	45	90
TU Z 2 CN 18-10	NF A49-117	Min%					9.00	17.00					470			
		Max%	0.030	2.04	0.045	0.035	1.05	12.15	20.20				720	175	45	90
TU Z 2 CND 17-12	NF A49-117	Min%					10.50	16.00	1.90				470			
		Max%	0.030	2.04	0.045	0.035	1.05	13.15	18.20	2.50			720	175	45	90

ISO



CERTIFICATE

The TÜV CERT Certification Body
of TÜV NORD CERT GmbH

certifies in accordance with TÜV CERT
procedures that

LUDA BAIHAO STEEL PIPE FACTORY
No.166, Jianzhong Street,
Longwan District, Yongzhong Town,
Wenzhou City, P. R. China

has established and applies a quality management system for

Manufacturing and Sales of Stainless Steel Pipes and Tubes

An audit was performed, Report No. 25-3838/2006
Proof has been furnished that the requirements according to
ISO 9001 : 2000
are fulfilled.

The certificate is valid until **10 April 2009**
Certificate Registration No. **04 100 062080**





TÜV CERT Certification Body of
TÜV NORD CERT GmbH
Langenheckestraße 20 • D-41141 Essen

Bangkok, 11.04.2006

SAC, PEWIK, CA 17.08

PED



CERTIFICATE

Assessment of Material Manufacturer
Certificate-No.: 04 202 2 42 AP 06 065

Name and address of manufacturer: Luda (Taiwan) Industrial Co., Ltd.
Luda Baihao Steel Pipe Factory
No. 166, Jianzhong Street, Longwan District, Wenzhou City, Zhe Jiang Province
P.R. China

It is hereby certified, that the manufacturer has provided verification of compliance with the conditions in accordance with

AD 2000-Merkblatt W 0 / TRD 100
Directive 97/23/EC, Annex I, Chapter 4.3

The conditions for proper fabrication according to the aforementioned Technical Rules are present.


In particular the work has:

- > a product specific quality-assurance system
- > facilities that provide a proper and state-of-the-art fabrication and testing,
- > a quality assurance system which ensures the uniformity of the product mentioned in the annex,
- > competent supervisory and testing personnel.


The scope of this verification as well as details concerning the major conditions can be taken from the annex.

Valid until: 03 / 2009
Report No.: W0-BJ0327-16/2006 dated: 31.03.2006

Seoul, 31.03.2006

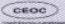


TÜV CERT Certification Body
for Pressure Equipment of
RWTÜV Systems GmbH



Notified Body Ident. No. 0044

RWTÜV Systems GmbH Tel. +82-2-6000 4222
Langenheckestraße 20 Fax +82-2-6000 4223
45141 Essen e-mail info@tuv-nord.co.kr

Mitglied der 

Copyright © TÜV NORD CERT GmbH 2006

Luda Development Ltd.
HONG KONG Head Office
Unit H, 3/F, Kaiser Estate Phase 2,
47-53 Man Yue Street, Hunghom, Kowloon,
Hong Kong.
TEL: (852) 2994 8774 FAX: (852) 2774 3493
web-site : www.ludahk.com

China Office
Luda (Taian) Industrial Co., Ltd
Luda (Menchun) Industrial Co., Ltd
Luda (Wenzhou) Industrial Co.Ltd
Contact : Daniel Tam (China Regional Manager)
Email : daniel@ludahk.com
Tel : (86) 538 3513 547
Fax : (86) 538 3513 548

The logo for LUDA features the word "LUDA" in a bold, blue, sans-serif font. The letter "D" is stylized, containing a white right-pointing triangle, which resembles a play button icon.

www.ludahk.com